



MONTHLY MEMBERSHIP PROGRESS REPORT

District 2 T1

Results as of: 03/31/2019

GMT: GREGORY GILLIAM

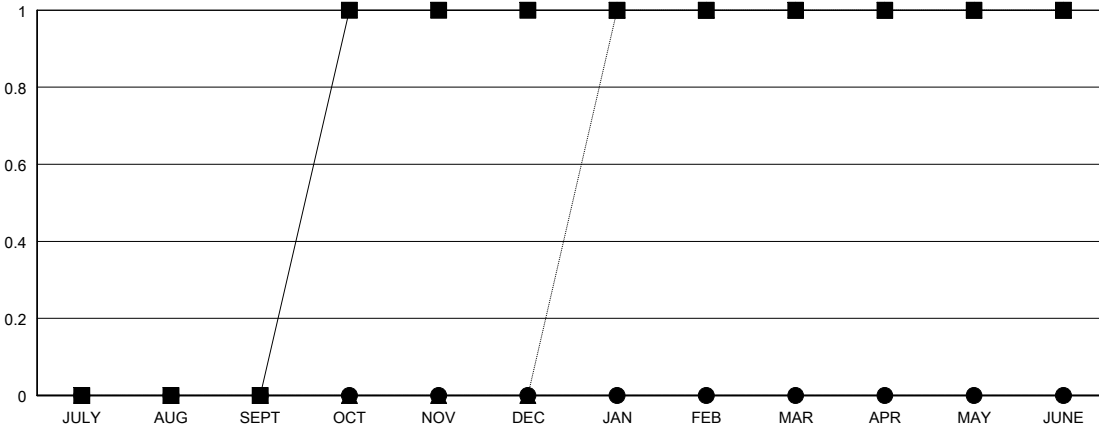
LOCATION TEXAS

GMT CA

Clubs			
RESULTS FOR 2018-2019			
QUARTER	NEW CLUB GOAL	NEW CLUBS	DROPPED CLUBS
JULY/AUG/SEPT	0	0	1
OCT/NOV/DEC	1	0	2
JAN/FEB/MAR	0	0	0
APR/MAY/JUNE	0	0	0

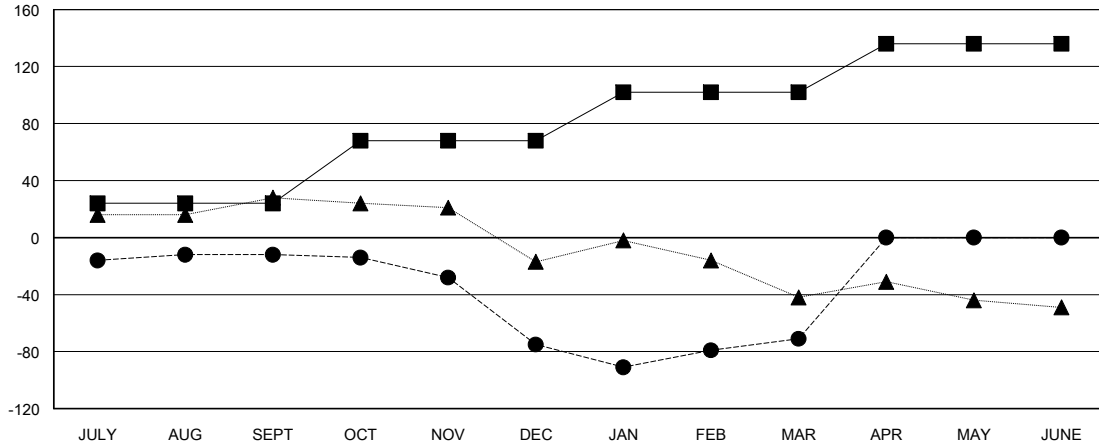
Members			
RESULTS FOR 2018-2019			
QUARTER	MEMBER GROWTH NET GOAL	MEMBER GROWTH ACTUAL	DROPPED MEMBERS ACTUAL (including transfers)
JULY/AUG/SEPT	24	42	50
OCT/NOV/DEC	44	36	95
JAN/FEB/MAR	34	68	37
APR/MAY/JUNE	34	0	0

GOALS AND ACTUAL NEW CLUBS CUMULATIVE



- - CURRENT YEAR GOALS FOR NEW CLUBS
- - CURRENT YEAR ACTUAL NEW CLUBS
- ▲ - LAST YEAR ACTUAL NEW CLUBS

GOALS AND ACTUAL MEMBERS CUMULATIVE



- - MEMBER GROWTH NET GOAL
- - MEMBER GROWTH ACTUAL
- ▲ - LAST YEAR MEMBERSHIP ACTUAL

DROPPED CLUBS: 3	23 CLUBS OF 38 ADDED 1 OR MORE NEW MEMBERS	<u>GENDER DISTRIBUTION</u>
<u>DROPPED MEMBERS</u>	CLICK HERE FOR CUMULATIVE MEMBERSHIP DATA	MALE 838 (69.83%)
		FEMALE 362 (30.17%)
		Women Percentage Fiscal Year Goal: 40%
		TOTAL FAMILY UNIT MEMBERS 138
DECEASED 11		FAMILY MEMBERS PAYING HALF DUES 69
CLUB CANCELLED 32		
OTHER 139		
TOTAL 182		